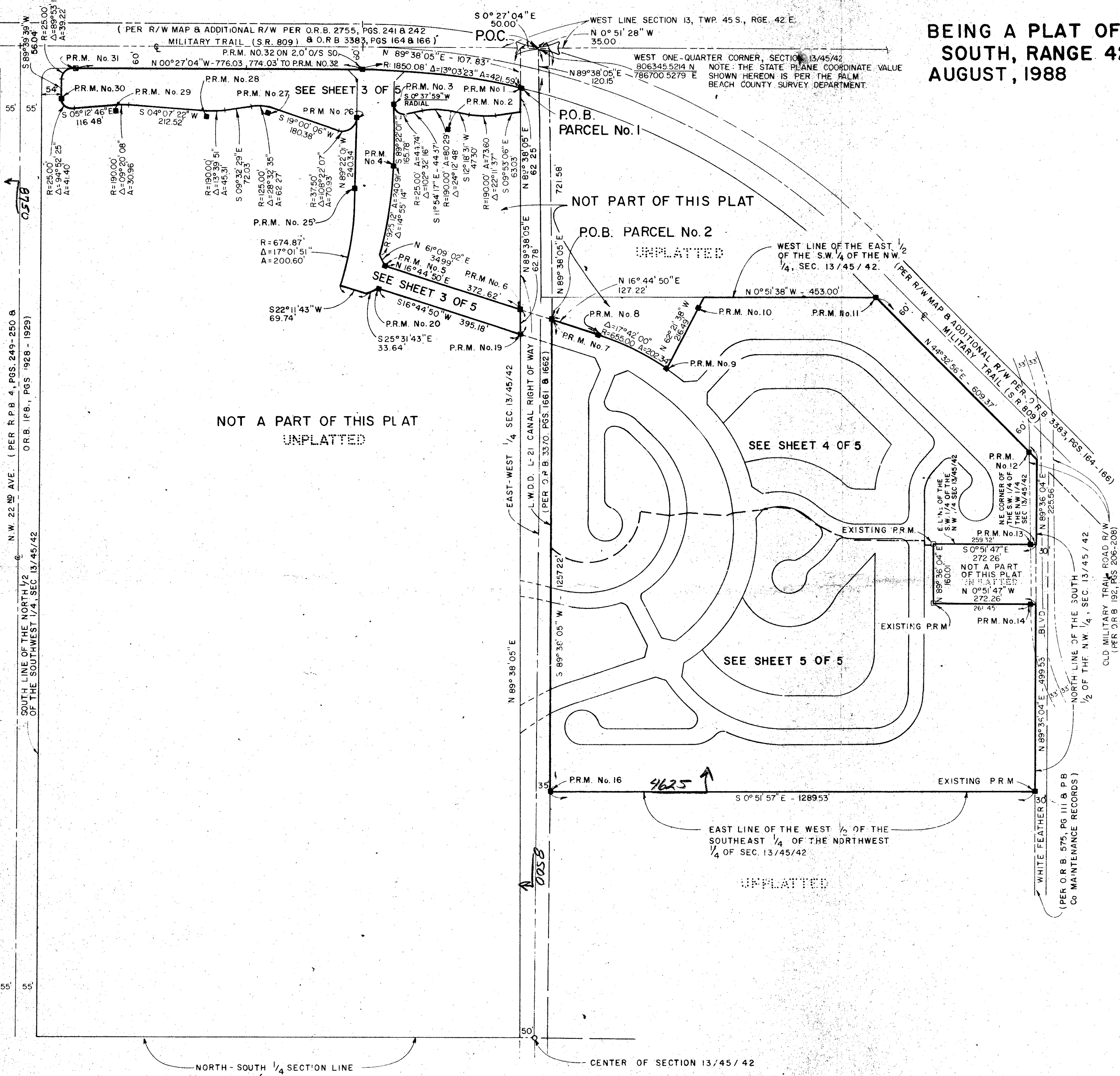
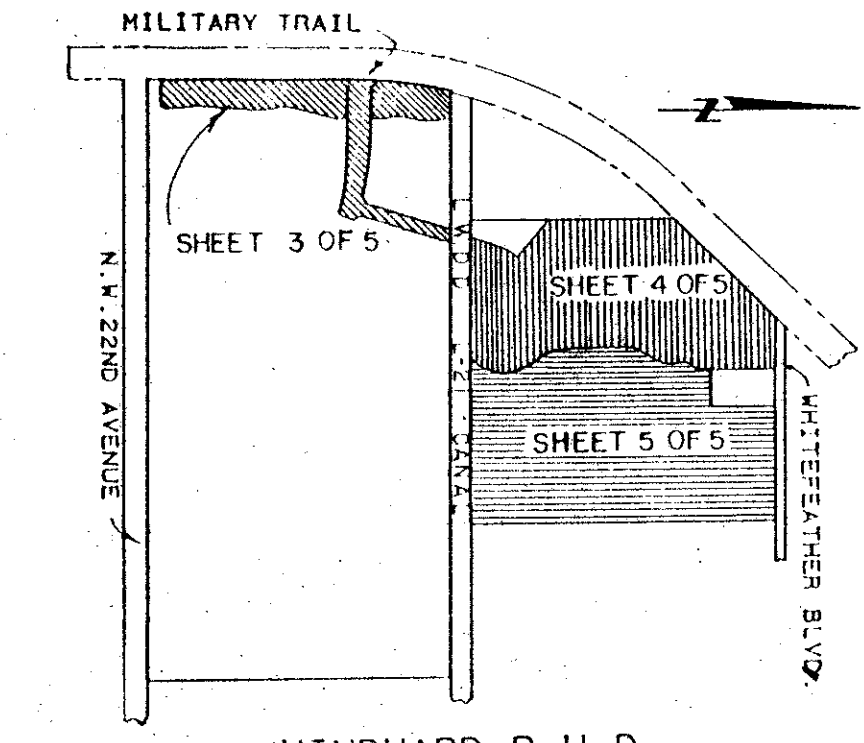
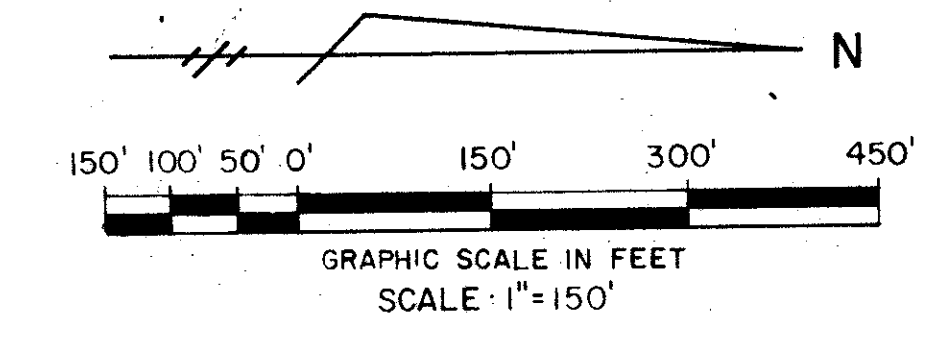


WINDWARD PALM BEACH (A P.U.D.)

70

BEING A PLAT OF A PORTION OF SECTION 13, TOWNSHIP 45 SOUTH, RANGE 42 EAST, PALM BEACH COUNTY, FLORIDA
AUGUST, 1988
SHEET 2 OF 5



SUPPLEMENT - Windward Palm Beach
 BOOK 61 B PAGE 76
 PLANNING RS 78-225
 34
 13/15/42
 TAZ 428 & 429
 P.U.B.

Plat 98-235

61/76

METRIC ENGINEERING INC.
 ENGINEERS - PLANNERS - SURVEYORS
 MIAMI - WEST PALM BEACH

DESIGNED
W.L.F.
DRAWN
G.G.
CHECKED
M.F.R.

WINDWARD PALM BEACH
 SHEET 2 OF 5